

FIRST NEWS

A monthly publication for the members and friends of First Evangelical Lutheran Church

AUGUST 2022

August 2022 Time with Tom

I am thinking about traveling this year and how it can change people or how it has the ability to help people think differently about themselves and the world they live in. Is it so difficult for us to imagine people being different than ourselves? Can people survive in the same world and not have what I have and not like to do the things I like to do. God created all things so we must all be the same and if we are not; then there must be something wrong with you. I am a perfect example of what God created so everything that is not me, must be wrong. However, *Malachi reminds me in chapter 2 Have we not all one father? Has not one God created us? Why then are we faithless to one another, profaning the covenant of our ancestors?* As we travel to other cultures around the states and the world, we see how others live, we can learn from them that we are part of God's creation and the world does not revolve around me. We can become so self-serving that we forget who's we are. We are children of God and not anything more than any other child of God is.

In first Peter, I found this warning: *"God opposes the proud, but gives grace to the humble."* ⁶*Humble yourselves therefore under the mighty hand of God, so that he may exalt you in due time.* ⁷*Cast all your anxiety on him, because he cares for you.* ⁸*Discipline yourselves, keep alert. Like a roaring lion, your adversary the devil prowls around, looking for someone to devour.* ⁹*Resist him, steadfast in your faith, for you know that your brothers and sisters in all the world are undergoing the same kinds of suffering.* ¹⁰*And after you have suffered for a little while, the God of all grace, who has called you to his eternal glory in Christ, will himself restore, support, strengthen, and establish you.* ¹¹*To him be the power forever and ever. Amen.*

We can learn from our sisters and brothers across the globe if we have eyes that are willing to look up and see all that God has done. In your travels this year, see what God has done and how you can bring your gifts of God to new places and bring back the gifts you receive as you are loved by other cultures in God's creation. *Amen, Live in Peace and the God of Love and Peace will be with you! 2nd Cor. 13:11b*
Pastor Tom Evenson

Our mission: First Evangelical Lutheran Church exists to **welcome** people to faith in Jesus Christ; **equip** persons with a faith that works in real life; and **send** us in service into the world in Jesus' name.

FIND THE
CHURCH CALENDAR
on page 5

What's Inside:

Pastor's Article, Pg. 1
Church Council, Pg. 2
Finance, Pg. 3
Memorials, Thanks Pg. 3
Mission Newsletter, unavailable at time of print
Youth Page, Pg. 4
Church Calendar, Pg. 5
Serving Groups, B-Days, Pg. 6
Senior Dining Menu, Pg. 7
WELCA, Pg. 8, 9
Worship Schedule, Pg. 10
Church-wide, Pg. 2, 8 - 12

CHURCH OFFICE HOURS
Mon. - Thur. 8 AM - 4:30 PM
Fri. 8 AM - 12 PM
320-693-2487
Email: firstoffice@hutchtel.net
WEBSITE:
www.firstlitchfield.org

Council Highlights

**“GOD’S WORK.
OUR HANDS.”**

**First Evangelical Lutheran
Church Council
2022**

PRESIDENT:
Corey Cervin

VICE PRESIDENT:
Karla Kadelbach

SECRETARY:
Dennis Gartner

TREASURER:
Andy Miller

**TEAM
REPRESENTATIVES:**

**Christian Education/
Youth & Family:**
Joe Berube
Abby Hemmingway
Amy Nelson

Stewardship & Finance:
Betty Allen
Karla Kadelbach
Andy Miller
Mike Langmo

**Social Ministry/
Evangelism:**
Betty Allen
Joe Berube
Meredith Elj
Abby Hemmingway
Amy Nelson

Endowment/Memorial:
Corey Cervin
Chuck Fenton

Property:
Dennis Gartner
Chuck Fenton
Gordon Burdick

Worship & Music:
Gordon Burdick
Meredith Elj
Mike Langmo

Personnel:
Corey Cervin

No church council meeting in July 2022.



**FLC is hosting this event.
Tuesday, August 2, 2022
from 4:30 to 7:30 p.m.
We will be serving hot dogs!
Please join us in Central Park.
Bring your chair.
Share the love of Jesus.**

Lutheran World Relief School Kit Project

Imagine having to choose between a meal or purchasing a notebook. Project Promise School Kits are sent to places where even the few required school supplies may be more than a family can afford. Pencils and paper can help write a positive future.

With school supplies on sale this time of year at great savings, it is a perfect time to help the Sunday School children collect supplies for the LWR School Kits.

- Please give new items only.
- Please do not donate items with any religious symbols, messages or your group's name.
- Please do not donate any items decorated with a U.S. flag, patriotic or military symbols, or references to the armed forces, including camouflage.
- Do not add other items or leave out any of the items listed.

- **One 30-centimeter Ruler**
- **One pencil sharpener**
- **Four 70 sheet notebooks of wide or college ruled**
- **One blunt scissors (safety scissors with embedded blade works well)**
- **Five unsharpened #2 pencils with erasers**
- **One 2 1/2" eraser**
- **Five black or blue ballpoint pens (no gel ink)**
- **One box of 16 or 24 crayons**



x1

One 30-centimeter ruler, or a ruler with centimeters on one side and inches on the other



x1

One pencil sharpener



x4

Four 70-sheet notebooks of wide- or college-ruled paper approximately 8" X 10 1/2"; no loose-leaf paper



x1

One blunt scissors (safety scissors with embedded steel blades work well)



x5

Five unsharpened #2 pencils with erasers; secure together with a rubber band



x5

Five black or blue ballpoint pens (no gel ink); secure together with a rubber band



x1

One box of 16 or 24 crayons



x1

One 2 1/2" eraser

General Fund:

Total Income for the month of June 2022: \$30,425
 Expenses for the month of June 2022: \$25,769

Year to Date:

Income as of June 2022: \$172,161
 Expenses as of June 2022: \$186,953



The water of life

Christ is like a river that is continually flowing. There are always fresh supplies of water coming from the fountainhead, so that a man may live by it and be supplied with water all his life. So Christ is an ever-flowing fountain; he is continually supplying his people, and the fountain is not spent. They who live upon Christ may have fresh supplies from him for all eternity; they may have an increase of blessedness that is new [and] never will come to an end.

—Jonathan Edwards

MEMORIALS, GIFTS & THANKS

Gifts were given to the General fund and Worship/Music fund in memory of Karl Lundin by Richard and Carol Heath, John and Katie Hulterstrum, Wayne and Linda Carlson, Harold and Marilyn Lundin, John and Jo Carlson, Jim and Elaine Lenhard, Gary and Carolyn Vollmer, Jim and Julie Rick, Gary and Kathy Cervin, Jim and Janet Lange, Ron and Barb Piepenburg, Stanley and Sylvia Kittelson, Roger and Elaine Stensrud, Dave and Irene Schwartz, Mark and Judy Hulterstrum, Sylvia Baumgartner, DeWayne and Iona Albright, John and Shirley Lekander, Duane and Darlene Henkelman, Vern and Lil Madson, Charlie and Jo Ann Lindstrom, Bob and Sharon Johnson, Jim and Barb Alsleben, Steve and Kari Kordahl, Lynn Lahr, all of the staff at Wings, Barbara Keller, JoAnne Rust, Dave and Tracy Johnson, Richard and Betty Allen, Jeanette Erickson, Jean Wieland, Carol Dragt, David and Darlene Meidal, Mark and Julie Bredeson, Dianne Thorp, and Chuck and Karen Eberhard.

Gifts were given to the General fund in memory of Judy Rademacher, Carol Dragt’s sister, by Mark and Julie Bredeson, Marge Hellzen, Dianne Thorp, Gary and Kathy Cervin, Jim and Janet Lange, Bob and Sharon Johnson, and Steve and Jackie Kraushaar.

Gifts were given to the General fund in memory of Joyce Boxell, Linda Larson’s sister, by Mark and Julie Bredeson, Jerry and Lana Johnson, and Mike and Kris Nelson. Bob and Sharon Johnson.

Special Thanks

Our family Thanks you for all the memorials to First Lutheran and love and support given at this difficult time of our loss of Karl. We are blessed with our church family. Karl Lundin family

Thank you to everyone for the cards of healing, prayers, and concern for me during my hip surgery. Gary Smith

To the June Serving Group — Many thanks to everyone who helped with the June serving needs! We truly appreciate your help! Jackie and Steve Kraushaar and Laurie and Howie Koehn

YOUTH PAGE

MST 2024 Please help support them at the following events



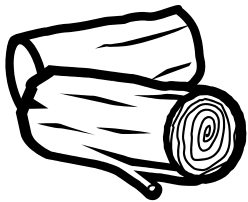
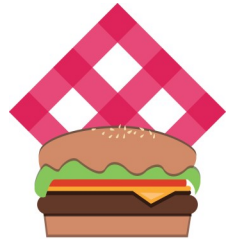
MEEKER COUNTY FAIR

August 3-7

Please start thinking ahead on how you can help us at the fair. We are looking for food donations and workers.

Volunteer sign-up sheets are in Chilstrom Hall.

Thank you for all of your support!



FIREWOOD

Did you know that the MST group has a supply of firewood at the Lake Ripley Campground? You can support our group by purchasing a bundle or two when you are camping or if you just need some wood for a campfire on your own property! Wood costs \$5 per bundle and can be found in a shed located in the middle of the campground.

LOOKING AHEAD TO SEPTEMBER.....



Confirmation Meeting for 10th grade students & parents on Wed. Sept. 7th at 6:00 p.m.

Confirmation Meeting for 8th and 9th grade students & parents Wed. Sept. 14th at 6:00 p.m.

Starting New this year: 7th grade Confirmation Prep Class Sunday Mornings at 9:30 a.m.

ALSO NEW THIS YEAR:
Wed. Evening Bible Study
Open to All!!
If you are interested please
let the church office know.



**JOIN US FOR
SUNDAY SCHOOL**

Volunteers Needed:
Teachers, Guides, Subs, &
Helpers for Confirmation and
Sunday School.
Please let the church office
know if you can help!
Thank you!!

Sunday School Rally Sunday - Sunday Sept. 18th
9:30 a.m. - 10:30 a.m.

Please join us for an hour of fun! We will be registering students and getting information about the upcoming year.

AUGUST 2022

AUGUST 2022 Calendar

August 2022						
Sun	Mon	Tue	Wed	Thu	Fri	Sat
1 First Evangelical Lutheran Church 703 South Sibley Ave. Litchfield, MN 320-693-2487		2 7:00 a.m. BREW – Chilstrom 8:00 a.m. BREW – FB Live 2:00 p.m. Worship w/Comm at Meeker Manor 6:30 p.m. NA – Chapel 4:30 p.m. National Night Out, Litchfield Central Park	3 Entry Day: Meeker County Fair 9:00 a.m. Staff Mtg. 5:30 – 6:15 p.m. Hope for the City, food distribution 7:00 p.m. Worship with Communion in Chapel	4 MST FOOD STAND 7:55 a.m. "Open Gate" on KLFDRadio 6:30 p.m. Smart Recovery Mtg. Chapel	5 MST FOOD STAND	6 MST FOOD STAND
7 MST FOOD STAND One Service: 10:45 a.m. ELCA COOP Community Worship, Meeker County Fairgrounds Band Shelter		9 7:00 a.m. BREW – Chilstrom 8:00 a.m. BREW – FB Live 6:30 p.m. NA – Chapel	10 9:00 a.m. Staff Mtg. 5:30 – 6:15 p.m. Hope for the City, food distribution 7:00 p.m. Worship with Communion in Chapel	11 7:55 a.m. "Open Gate" on KLFDRadio 2:00 p.m. Ecumen Worship 6:30 p.m. Smart Recovery Mtg. Chapel	12 9:30 a.m. Christian Women's Mtg	13 7:00 a.m. Men's Group
14 8:30 a.m. ELCA COOP - Radio 8:30 a.m. Worship w/Comm. & Baptism for Miles Schilla 9:30 a.m. Fellowship/coffee Celebrating Idell Kadelbach's 90 th Birthday 6:00 p.m. 4-H Mtg. Chilstrom Hall		16 7:00 a.m. BREW – Chilstrom 8:00 a.m. BREW – FB Live 6:30 p.m. NA – Chapel 7:00 p.m. Church Council	17 9:00 a.m. Staff Mtg. 5:30 – 6:15 p.m. Hope for the City, food distribution 7:00 p.m. Worship with Communion in Chapel	18 7:55 a.m. "Open Gate" on KLFDRadio 6:30 p.m. Smart Recovery Mtg. Chapel *WELCA – Funday *See pg. 8	19	20 5:00 p.m. Movie Night Holy Word Theater
21 8:30 a.m. ELCA COOP - Radio 8:30 a.m. Worship w/Comm & Baptism for Henry Adams 9:30 a.m. Fellowship/coffee		23 7:00 a.m. BREW – Chilstrom 8:00 a.m. BREW – FB Live 6:30 p.m. NA – Chapel	24 9:00 a.m. Staff Mtg. 5:30 – 6:15 p.m. Hope for the City, food distribution 7:00 p.m. Worship with Communion in Chapel	25 7:55 a.m. "Open Gate" on KLFDRadio 6:30 p.m. Smart Recovery Mtg. Chapel	26	27 7:00 a.m. Men's Group
28 8:30 a.m. ELCA COOP at FLC - On KLFDRadio 8:30 a.m. Worship w/Comm 9:30 a.m. Fellowship/coffee		30 7:00 a.m. BREW – Chilstrom 8:00 a.m. BREW – FB Live 6:30 p.m. NA – Chapel	31 9:00 a.m. Staff Mtg. 5:30 – 6:15 p.m. Hope for the City, food distribution 7:00 p.m. Worship with Communion in Chapel	Local Cable Access TV Schedule: Sunday 11 a.m. Encore Presentation COOP Monday 11 a.m. Encore Presentation COOP Tuesday 11 a.m. Encore Presentation Sun. First Lutheran Church Wednesday 11 a.m. Encore Presentation Sun. COOP Thursday 11 a.m. Encore Presentation Sun. Trinity Grove City Thursday 3 p.m. Encore Presentation Sun. FLC Non-Trad. Service Friday 11 a.m. Encore Presentation Sun. Zion		

Serving Group & Birthdays

AUGUST 2022 SERVING GROUP

Chairs:

Robert & Amy Nelson

Ben Kranz & Chelsea Snodgrass

Kathy Kronbeck

Russell & Shirley Kronbeck

Todd & Sarah Kuechle

Allene Lachelt

Tony Laidlaw

Jim and Janet Lange

Michael & Debra Langmo

Bryan & Linda Larson

Gary & Lori Larson

Daniel & Heather Lease

David & Deanna Lease

Jonathan & Penny Lease

John & Shirley Lekander

Allen and Dana Liestman

Charlie & JoAnn Lindstrom

Ramona Lohse

Craig & Gina Lokken

Sadie Ludowese

Jennifer Lundin

August Ushers

8:30 a.m.

Mike Thomas - C
Derek Isaacson

August



Open



August
BIRTHDAYS

AUGUST 1

Kim Evenson
Michael Hemingway
Breanna Huikko
Kyle Kramer
Tyler Wagner

AUGUST 2

Brian Boll
Alexa Desens
Austin Elj

Nicholas Lundin

AUGUST 3

Kimberly Herzog
Joseph Thiele

AUGUST 4

Donald Hokanson
Karla Kadelbach
Hunter Keppers
Tyler Sommerfeld

AUGUST 5

Sacia Matheson
Gordon Burdick
Henry Weimer

AUGUST 6

Steven Durkee
Lola Schlenner
Teresa Stille
Heidi Thoma

AUGUST 7

Douglas Desens
Darlene Klabunde

AUGUST 8

Paulette Biermann
Stephanie Herzog

Susan Lemmer
Antonia Barrick

Daniel Walberg

AUGUST 9

Michael Boyle
Megan Larson
Trinity Meyer

AUGUST 10

Sean Koehn

AUGUST 11

Theresa Hoff
Gayle Madsen
Hayden Miller
Katie Kreger
Dylan Schutz

AUGUST 12

Darlene Henkelman
Amber Hoff
Casey Hoff
Jeffrey Holmberg
Dylan Madsen
Evan Matheson
Cindy McKechney

AUGUST 13

Sue Fenton
Ridley Geffre
Jennifer Hanson
Jason Isaacson

AUGUST 14

Brittany Burdick
Heidi Kerstein
Derek Fruetel
Dennis Hanson

AUGUST 15

Karla Rick
Chase Kowalczyk

AUGUST 16

DeWayne Albright
Idell Kadelbach
Amy Olson
Nicholas Steinhaus

AUGUST 17

Savannah Bearl
Alison DeWolf
Angie Fruetel
Melissa Hoffmann
Sandra Johnson

AUGUST 18

Kipp Kleinschmidt
Chance Rodriguez

AUGUST 19

Alexander Draeger

AUGUST 20

Noah Hanson

AUGUST 21

Mary Desens
Sandra Hickman

AUGUST 22

James Alsleben
Laurie Koehn

AUGUST 23

Tristen Eberling

AUGUST 24

Griffin Butler
Jennifer Carlson
Winton Nelson
Scott Stradtmann

AUGUST 25

Shannon Asmus
Danny Estrada
Janell Haiwick
Wendy Halverson
Trevor Isaacson
Johnny Magedanz
Brandon Stille

AUGUST 26

Cody Beavers
Lowell Goodrich
Nicole Madsen
Christopher Nistler
Barbara VanNurden

AUGUST 27

Stuart Busse
Jaxon Pinilla

AUGUST 28

AUGUST 29

Michael Boll
Nathan Harvego
Kole Herzog
Larry Radunz
Karlyn Sackett

AUGUST 30

Brandon Burdick
Amy Sherwood

AUGUST 31


Kayla Housman
Ricky Schutz

Senior Dining Menu

Lutheran Social Service

August 2022

Senior Nutrition Services

Monday, August 1st	Tuesday, August 2nd	Wednesday, August 3rd	Thursday, August 4th	Friday, August 5th
Spaghetti w/ Meat Sauce	Pork loin	Chicken Pasta Salad	Roasted Turkey w/ gravy	BBQ Pork on Bun
Romaine Salad w/ Dressing	Yams	Sliced Cucumbers	Mashed Potato	Cole Slaw
Pineapple	Broccoli	Fruit Salad	Green Beans	Pineapple Dessert
Texas Toast	Bread w/ Margarine	Dessert	Dinna Roll w/Margarine	Low Fat Milk
Cookie	Dessert	Low Fat Milk	Dessert	Low Fat Milk
Low Fat Milk	Low Fat Milk	Low Fat Milk	Low Fat Milk	Low Fat Milk
Monday, August 8th	Tuesday, August 9th	Wednesday, August 10th	Thursday, August 11th	Friday, August 12th
Chef Choice entrée	Ham & Turkey Chef Salad	Goulash	Brat	Sloppy Joe
vegetable	Bread Stick	Corn	Mashed Potatoes w/ Margarine	Bun
vegetable/fruit	Fresh Orange	Tropical Fruit	Sauerkraut	Cheesy Hashbrown
Bread	Dessert	Bread / Margarine	Bread w/ margarine	Baked Beans
Dessert	Low Fat Milk	Low Fat Milk	Dessert	Dessert
Milk	Low Fat Milk	Low Fat Milk	Low Fat Milk	Low Fat Milk
Monday, August 15th	Tuesday, August 16th	Wednesday, August 17th	Thursday, August 18th	Friday, August 19th
Chicken Fried Steak w/Gravy	Ham	Tuna Pasta Salad	Meatloaf	Turkey & Cheese Sandwich
Mashed Potatoes w/ gravy	Cooked Cabbage	Tomato Wedges	Augratin Potatoes	Lettuce Salad w/ dressing
Italian Blend	Carrots	Pears	Italian Blend	Peaches
Dinner Roll w/Margarine	Dinner Roll / Margarine	Dessert	Dessert	Dessert
Dessert	Dessert	Low Fat Milk	Low Fat Milk	Low Fat Milk
Low Fat Milk	Low Fat Milk	Low Fat Milk	Low Fat Milk	Low Fat Milk
Monday, August 22nd	Tuesday, August 23rd	Wednesday, August 24th	Thursday, August 25th	Friday, August 26th
Salisbury Steak w/Gravy	Baked Chicken	Taco Salad	Chicken Salad on	Smothered Pork loin
Mashed Potatoes w/ Gravy	Baked Potato w/Sour Cream	Salsa / Sour Cream	Crossiant	Scalloped Potatoes
Green bean	Peas	Corn Chips	Cucumber and Tomato Salad	Corn
Dinner Roll w/Margarine	Bread w/Margarine	Apple	Tropical Fruit	Bread w/ Margarine
Dessert	Dessert	Dessert	Dessert	Dessert
Low Fat Milk	Low Fat Milk	Low Fat Milk	Low Fat Milk	Low Fat Milk
Monday, August 29th	Tuesday, July 30th	Wednesday August 31st	 <div style="border: 1px solid black; padding: 5px; text-align: center;"> Call LSS Meals to order/change 320-693-6203 <i>(Litchfield Site-Leave Message)</i> </div>	
Turkey & Gravy over	Tater Tot Casserole	Ham Pasta Salad		
Mashed Potatoes	Green Beans	Creamy Cucumbers		
Peas and Carrots	Warm Peaches	Cantaloupe		
Dinner Roll w/ Margarine	Dinner Roll w/ Margarine	Dessert		
Warm Fruit Crisp	Dessert	Low Fat Milk		
Lowfat Milk	Low Fat Milk	Low Fat Milk		

This service is funded in part by a contract from the Area Agency on Aging with funding from the Federal Older Americans Act through the Minnesota Board on Aging. Approved by Donna Dunlap RD, LD
 Additional funds are provided by the State of Minnesota, United Ways, local communities, and other adult contributions. Menu is Subject to Change
 Posted menu is regular diet. Diabetic, sodium, and fat restricted diets available upon request. Regular menu provides average of 700-800 calories. SNAP or EBT Payment is accepted
 If you are interested in learning about the Supplemental Nutrition Assistance Program, please call 1-800-488-4146.

320-693-6203

WELCA MINUTES July 21, 2022

WELCA met on July 21, 2022, in Chilstrom Hall with Betty Allen calling the meeting to order. The Purpose Statement was recited.

Betty Allen gave the devotions. The Secretary's report was read. Motion to approve by Lana Johnson with a second by JoAnn Lindstrom. Motion approved. The Treasurer's report was given with a motion by Sue Lemmer and a second by Jackie Kraushaar to approve. Motion carried.

Old Business: There was a discussion on the cost of disposable coffee cups. The cost has gone from \$18 a case to over \$90. Should we go back to using the church cups and washing them. It was decided that Betty should bring this up to the council since they are paying for the cups and not WELCA.

The August Funday on the 18th will be to go to Hutch for lunch at the Kings Wok and then a movie. The theater does not know the name of the movie until two weeks before. People would have the option of going to lunch and then the movie or returning to Litch and not going to the movie. A signup sheet will be in the office.

Betty talked to the Property Committee about putting fans in the kitchen. We will be going ahead with the project with a possibility of two fans.

There was no New Business.

Program was: Angel Dress Program by Patty Hauer from Darwin.

Serving in September will be Lana Johnson and Kris Nelson.

The Lord's Prayer was recited and the table prayer was given.

Dessert was served by Gladys Johnson, Marilyn Swanson and Dee Bollin.

Respectively submitted,
Sue Lemmer, Secretary



Attention: First Lutheran Women

We will start quilting again on September 6th. Come join the fun. You do not need to have quilting or sewing skills to help us make quilts for Litchfield Social Services, Hospice, Wings, First Lutheran graduating high school seniors and Lutheran World Relief. We are in need of ladies who can tie knots and do pinning to keep our assembly line working.

We quilt September through May, the first and fourth Tuesday of the month, 8:30 a.m. to 11:00 a.m. We take a break at 9:30 a.m. to enjoy coffee and treats. We are also in need of colored sheets in good condition, to be used as backings, and cotton fabric for the quilt tops.

If you have any questions, please contact Marilyn Swanson, Jackie Kraushaar or Elaine Lenhard.

WELCA PROGRAM

Our speaker was Patty Hauer, Angel Dress Project Coordinator, from WELCA at All Saints Lutheran Church in Darwin. Patty worked as a medic in Waconia and would see babies that had died and were left by a river and didn't like that they were wrapped in a cloth. She said that when she retired, she wanted to make a dress for those babies. For the past five years, a group of ladies has been making dresses for babies that have died. They make them out of old wedding dresses and even prom dresses. They meet the first Monday of each month in the basement of All Saints and anyone is welcome to join them. There are various jobs to be done, so you don't even have to sew! They donate the dresses to hospitals, funeral homes and coroner's offices. The first 12 dresses they made were donated to Meeker Memorial Hospital. Included with each dress is a cap, a blanket and a keepsake cross, angel or tiny hat. They even send boxes along with snowbirds to be dropped off at hospitals on their way south. That saves the expense of mailing out the package, which is their biggest expense. Cash donations are always welcome.



Patty Hauer



Top left is a blanket wrap for a less than 1# baby,
 Next is for a 1 1/2 to 2 1/2# and then 2 to 4#.
 Bottom row is a dress for a 3 to 6# and a 5 to 8# baby.



Example of a Keepsake for the family.

Donations can be sent to

Patty Hauer (with a check made out to WELCA)
 68166 215th St
 Darwin, MN 55324

Churchwide



Worship Schedule

Wednesday, August 3, 2022

7:00 p.m. Worship w/Communion in Chapel

Sunday, August 7, 2022 One Service at:

10:45 a.m. ELCA Coop/Community Worship
@ Meeker County Fair Band Shelter

Wednesday, August 10, 2022

7:00 p.m. Worship w/comm. in Chapel

Sunday, August 14, 2022

8:30 a.m. Worship w/comm.

9:30 a.m. Fellowship and Coffee Hour

Wednesday, August 17, 2022

7:00 p.m. Worship w/comm. in Chapel

Sunday, August 21, 2022

8:30 a.m. Worship w/comm.

9:30 a.m. Fellowship and Coffee Hour

Wednesday, August 24, 2022

7:00 p.m. Worship w/comm. in Chapel

Sunday, August 28, 2022

8:30 a.m. ELCA COOP @ FLC on KLFD

8:30 a.m. Worship w/comm.

9:30 a.m. Fellowship and Coffee Hour

September 4, 2022 Labor Day Weekend

10:45 a.m. Grove City, Windmill Park
ELCA COOP Worship Service



Local Cable Public Access TV Schedule:

Sun.	11 a.m. Encore Presentation	COOP
Mon.	11 a.m. Encore Presentation	COOP
Tue.	11 a.m. Encore Presentation	Sun. FLC
Wed.	11 a.m. Encore Presentation	Sun. COOP
Thu.	11 a.m. Encore Pres.	Sun. Trinity G.C.
Thu.	3 p.m. Encore Presentation	Sun. FLC
Fri.	11 a.m. Encore Presentation	Sun. Zion



FUNERALS AT FIRST LUTHERAN

Delzelle "Del" Busse

July 27, 2022

Please keep her family and friends
in your prayers.



Preparation for worship

- ◇ On this warm summer day, Lord, may we lie back in your love, like on a sunny beach near singing waves, or in shady grass under a whispering tree.
- ◇ Feed me with the sweetness of your grace, Creator God, and quench my thirst today with the living water of your Son.
- ◇ "Before I formed you in the womb I knew you," says God to each of us. "Before you were born I set you apart" (Jeremiah 1:5, NIV). Lord, help us know your holy purposes for us this day.
- ◇ Summer is ending, O Holy One. Stir up my anticipation and hope for new routines and endeavors. Thank you for being with me in all seasons of life.

MOVIE NIGHT

Saturday, August 20, 2022

5:00 p.m.

Holy Word Theater, FLC

Movie:

Please join us for a good movie
and popcorn.

Please bring your own beverage.

PLEASE PRAY FOR OUR MEN AND WOMEN IN THE MILITARY:



*Our members known to be in the military are:

Staff Sgt. US Army, Zachary Olimb, Vicenza, Italy, grandson of Edna and Martin Oldenburg, Vern and Lil Madson;

Master Sgt. Austin Kleinschmidt, 934th Airwing, Minneapolis, son of Kipp and Lynette Kleinschmidt;

Staff Sgt. Matthew Wiechmann, stationed at Fort Drum, NY; son of Virgil and Jamie Wiechmann;

Major Troy Thomas, Severance, CO, nephew of Valda Thomas and Mike and Gaylene Thomas;

Eric Kammermeier, active duty United States Navy, son-in-law of Mike and Beth Boyle;

Airman 1st Class John Rogers, Misawa Air Force Base, Japan. Grandson of Janet and Jim Lange.

Welcome Home! to those of you who now have returned to the States. Thank you all for your service

GLOBAL MISSIONS OFFERING: Operation Boot Strap - Africa

On Sunday, August 14th at 9:30 a.m. in Chilstrom hall - please join us for fellowship to celebrate Idell Kadelbach's 90th Birthday

GARDEN PRODUCE SHARING



The Social Ministry Team invites you to drop off or pick up fresh garden veggies and fruit during the summer and fall growing season. Let us once again share our produce with one another!

A table is located in the southeast (Sunday School) entrance.

Thanks to all who participated last season.
Enjoy the harvest!

Please keep our shut-in members in your prayers,

Meeker Manor: Mary Klosner, Lois Rusch

Emmaus Place: Mae Brehmer

Bethany Home: Janet Lundin

Litchfield, in own home: Jutta Goodrich, Darlene Miller

Lakeside, Dassel: Martin and Edna Oldenburg



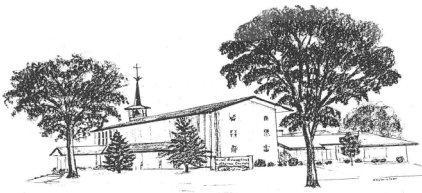
Be still, Receive God's Love, Embrace God's Word, Welcome the Day.

B.R.E.W.

meets every **Tuesday morning at 7:00 a.m.** with Pastor Tom for coffee and fellowship. Join us!!

FIRST NEWS is a monthly publication of First Evangelical Lutheran Church,
703 S. Sibley Ave. Litchfield, MN 55355

Please send submissions to: The Church Office by August 15th
For the NEXT ISSUE: September 2022



FIRST NEWS

FIRST EVANGELICAL LUTHERAN CHURCH
703 South Sibley Avenue • Litchfield, MN 55355

Address Service Requested

Non Profit
Organization
U.S. POSTAGE PAID
Permit NO. 1
Litchfield, MN
55355



Ministry Staff:

Tom Evenson, Pastor
firstsr@hutchtel.net

Heidi Thoma, Education Coordinator
heidithoma3@gmail.com

Judy Berglund, Office Manager
firstoffice@hutchtel.net

Sara Rick, Bookkeeper
firsttr@hutchtel.net

Carol Heath, Financial Secretary
firsttr@hutchtel.net

Bea Devereaux, Organist, Senior Choir, and Bell Choir Director

Carol Dragt, Director of Music, Non-Traditional

Kipp Kleinschmidt, Media Director
firstmedia@hutchtel.net

Scott Nelson, Custodian

Joel Ramthun, Custodian

First Lutheran Church Office: 320-693-2487

LIKE us on Facebook!
Or Follow us on Youtube!



Please join us at the fair!

Sunday, August 7, 2022

10:45 AM

**Litchfield Community ELCA
Churches Worship Service**

**Meeker County Fair Grounds
Bandstand**