

# FIRST NEWS

A monthly publication for the members and friends of First Evangelical Lutheran Church

FEBRUARY 2022

## February 2022 Time with Tom

Relentless cold, bone chilling and no end in sight. Where will our relief come when will we see the warmth of spring? We long for the days of shorts and tees when we can go outside for an evening walk. How long must we bear this cruelty, this persecution? David was asking something similar in the 42<sup>nd</sup> Psalm. <sup>2</sup> *My soul thirsts for God, for the living God. When shall I come and behold the face of God?* <sup>3</sup> *My tears have been my food day and night, while people say to me continually, "Where is your God?"* The same could be said about a pandemic that appears relentless. Where is God, when will this torment end?

We know spring will come and we will go to the beach or the cabin and we may even get in the now frozen water for a swim. Maybe we will take a ride in a boat, catch a fish or just go for that evening walk, without the parka. It will come, it has always come so we can rest in confidence that SPRING WILL BE HERE SOON. We do not know when the variants will subside, or end. We trust in the God as we walk in faith that we will find ways to overcome the symptoms and defeat the virus. What about David and his longing for a God who seems distant or nonexistent? What about us when we are depressed and hurting? Where is our God and when will our God return to give us relief from our sadness? John tells us our God is here, and he is ready to dry our tears. God has come to share in our sadness and take on our brokenness. Chapter 3:17 "Indeed, God did not send the Son into the world to condemn the world, but in order that the world might be saved through him. And again in the end of chapter 3 John reveals to us the one who will take away all our troubles and has been given the authority to speak of heavenly things; verses <sup>34</sup> *He whom God has sent speaks the words of God, for he gives the Spirit without measure.* <sup>35</sup> *The Father loves the Son and has placed all things in his hands.*

The son is from the father and comes to give us life now and forever. Jesus is the son whom John tells us came for Gods children. All Gods children will see the love of God and will live with God now and forever. At many funerals, Psalm 42 or parts of 42 are read, usually it is the first part: *As a deer longs for flowing streams, so my soul longs for you, O God.* <sup>2</sup> *My soul thirsts for God, for the living God. When shall I come and behold the face of God?* <sup>3</sup> *My tears have been my food day and night,*"

We will long for the help of The Lord as we grieve and as we await the coming spring. But our Lord and our God is here with us always. We can turn to our God at all times of the day. We can be with God always because God wants to be with us always. Don't give up on the relationship God started with you because God has not given up on us. To be in a good relationship with God we need to be in communication with God. Regular prayer throughout the day and reading the word of God everyday is a good way to get back the relationship God wants with us. If we are not reading the word or talking to God on a regular basis, it is going to be difficult to know what we are called too. And we are all called to care for each other and to care for all of Gods creation. When we care for each other and creation, our lives become richer and fulfilled because of the relationships we have. God loves us all and sent his only begotten son to die for us so that everyone who becomes like Jesus, by loving God and loving all of God's creation, will have eternal life with God; now and forever, (My interpretation of John 3:16).

Amen: Live in Peace and the God of Love and Peace will be with you! 2<sup>nd</sup> Cor. 13:11b.  
Pastor Tom Evenson

**Our mission:** First Evangelical Lutheran Church exists to **welcome** people to faith in Jesus Christ; **equip** persons with a faith that works in real life; and **send** us in service into the world in Jesus' name.

FIND THE CHURCH CALENDAR on page 9

### What's Inside:

- Pastor's Article, Pg. 1
- Church Council, Pg. 2, 3
- Finance, Pg. 3
- Mission Newsletter, Pg. 5
- Memorials, Thanks Pg. 6
- MST - 2022, Pg. 7
- MST - USA, Pg. 8
- Church Calendar, Pg. 9
- Serving Groups, B-Days, Pg. 10
- Senior Dining Menu, Pg. 11
- Worship Schedule, Pg. 14
- Church-wide, Pg. 4, 8, 12 - 16

**CHURCH OFFICE HOURS**  
Mon. - Thur. 8 AM - 4:30 PM  
Fri. 8 AM - 12 PM  
  
320-693-2487  
Email: [firstoffice@hutchtel.net](mailto:firstoffice@hutchtel.net)  
**WEBSITE:**  
[www.firstlitchfield.org](http://www.firstlitchfield.org)

# Council Highlights

**“GOD’S WORK.  
OUR HANDS.”**

**First Evangelical Lutheran  
Church Council  
2022**

**PRESIDENT:  
Corey Cervin**

**VICE PRESIDENT:  
Karla Kadelbach**

**SECRETARY:  
Dennis Gartner**

**TREASURER:  
Karla Hyberger**

**TEAM  
REPRESENTATIVES:**

**Christian Education/  
Youth & Family:**  
Joe Berube  
Abby Hemmingway  
Amy Nelson

**Stewardship & Finance:**  
Betty Allen  
Karla Hyberger  
Karla Kadelbach

**Social Ministry/  
Evangelism:**  
Betty Allen  
Joe Berube  
Amy Nelson  
Abby Hemmingway

**Endowment/Memorial:**  
Corey Cervin  
Beth Fruetel  
Chuck Fenton

**Property:**  
Andy Hoffman  
Dennis Gartner  
Chuck Fenton  
Gordon Burdick

**Worship & Music:**  
Beth Fruetel  
Gordon Burdick

**Personnel:**  
Corey Cervin

First Evangelical Lutheran Church – Council Minutes  
Tuesday, January 18<sup>th</sup>, 2022

Our Mission: FLC exists to welcome people to faith in Jesus Christ, equip persons with a faith that works in real life, and send us in service into the world in Jesus’ name.

Council Membership:

2022: Andrew Hoffman, Beth Fruetel, Karla Hyberger, Corey Cervin  
2023: Betty Allen, Karla Kadelbach, Amy Nelson, Abby Hemmingway  
2024: Dennis Gartner, Joe Berube, Gordon Burdick, Chuck Fenton

Devotions: Joe Berube

\*Secretary report was approved  
\*Treasurer report was approved (with a designation change under new business)

\*Pastors report:

Pastor Tom reported:  
Pastor Tom’s full report will be printed in the Annual meeting booklet.

Pastor did want to discuss with the council the importance of the First Lutheran congregation stepping up to find the group who will represent First Lutheran in the co-op discussions. We are looking for 6 to 8 “Lay Leaders” to commit to this cause and to help design, direct and coordinate the future of the co-op. Many of the other congregations involved in the co-op have already formed their group of Lay Leaders. If you are interested in becoming a Lay Leader for this cause or you want more information, please contact Pastor Tom or Judy at the Church office or contact a church council member.

Pastor Tom also noted that he was voted into the Meeker Area Ministries Board and will begin that role in the near future.

\*Team Reports:

\*Evangelism / Social Ministries:

~Social Ministries will be taking over the Blessing Box project. These are the boxes and the table in the entry that people can donate or pick up food items. The team will monitor the items being donated and fill the box / table as needed.

\*Church Property:

~Future planning for resurfacing (or replacing of the blacktop) the parking lot was discussed to coincide with the 150<sup>th</sup> anniversary at the previous meeting. We have made contact with two companies to give us preliminary budget numbers for this project. We understand this will be a major expense so the team is planning far in advance for the possibility of this project.

~An estimated cost for ceiling repair in the Old Chilstrom hall and the upper and lower hallways was discussed. We requested a second estimate for this project. New flooring in Old Chilstrom hall was also discussed. The team agreed that carpet squares would be the best option for this replacement.

~We discussed additional storage areas. After input from team members, it was decided to concentrate on cleaning existing storage areas to create the added space needed. There is a snow blower and a push style lawnmower that will be offered for sale to members of the congregation to gain storage space. Watch the newsletter for information if interested in purchasing these machines.

~The team discussed the phone system upgrade that was researched. The team agreed the upgrade is needed and will recommend moving forward with the improvements to the Council.

~Jim Alsleben will continue to add items to our tracking sheet as needed.

\*Personnel Committee:

~The Personnel team has been reviewing and refining staff salary and benefit packages for the 2022 budget.

**General Fund:**

**Year to Date:**

Total Income for the month of December 2021:	\$86,119	Income as of Dec. 2021:	\$422,235
Expenses for the month of December 2021:	\$30,650	Expenses as of Dec. 2021:	\$351,820

**\*Worship and Music:**

~In Old Business: A follow-up inquiry will be made to confirm the payment of the Sunday broadcasts are being sent to Zion church as per the agreement.

This confirmation was made and a payment is to be made to Zion Church in the amount of \$360.00.

~The team discussed the option to continue with the two services. Attendance numbers will be checked from September through December to help make this decision.

~The Lay Leaders from Zion have asked for a meeting regarding the planning of the co-op. This request will be followed up by Pastor Tom.

~Shane Zeppelin added a “Live Stream” button on the website to connect to You Tube.

~Discussion was held regarding a fair pay scale for substitute pianists and organists. They will consult with the Personnel team for guidance.

~Lenten service schedule was discussed.

**\*Endowment Team:**

~No donation requests were received.

**\*Old Business:**

~150<sup>th</sup> Anniversary committee is meeting on January 19<sup>th</sup>. The 150<sup>th</sup> celebration is scheduled for August of 2023.

~See Pastor Tom's report above regarding the co-op discussion.

~Phone system update: A discussion based on the Property team's recommendation, the new phone system will be installed pending the approval of the 2022 budget.

~Proposed budget for 2022 was approved by the Council.

**\*New Business:**

~Annual meeting booklets will be available at the January 23<sup>rd</sup> services. Any questions may be addressed between services at coffee hour.

~A Chili cook off / or hotdish competition was discussed. Council would like to pursue an event like what we did a couple years ago. Plans would include the Silent Auction portion as well. Stay tuned...

~The upcoming Council Retreat was briefly discussed. Details to be determined.

~Lenten services were discussed including discussions regarding soup suppers.

~Outgoing council member debriefings were discussed for those not remaining on the council.

~A request was made by the financial team to move funds from a “Miscellaneous Designated” account into other accounts that are more workable within the “Shepherd’s Staff” software. Future donations will be funneled into the correct accounts so we don’t end up with this same concern in the future. A motion was made and passed to allow this transfer of funds to take place.

**\*Dates to remember:**

\*Coop services continue virtually on Sunday’s at 8:30

\*In person services Sunday’s 8:30 and 10:45

\*Confirmation classes are Wednesday’s at 6:00

\*Annual Meeting Sunday January 30<sup>th</sup> after 8:30 Service (One service only)

\*MST French Toast Breakfast January 30<sup>th</sup> 7:00AM to 11:00AM

\*Executive Team meeting Tuesday February 1st at 6:30 PM

\*Team meetings Tuesday February 1st at 7:00 PM

\*Council meeting Tuesday February 15th at 7:00 PM

\*Ash Wednesday March 2<sup>nd</sup>.

Submitted by Dennis Gartner





# Churchwide

First Lutheran Church Property team is selling a Lawn Mower and Snow Blower by sealed bid. Please place your sealed offer in the church office by February 15, 2022.



21" Craftsman Self Propelled Walk Behind with Bagger Lawn Mower As is!

32" John Deere Snow Blower Model #1032 D Electric Start As is!



Please call Rick Sandry if you would like to set up a time to check them out.

## Women of the ELCA

WELCA will meet on: February 17, 2022  
1:30 p.m.  
Chilstrom Hall  
All are welcome!!



CROW RIVER CONFERENCE ASSEMBLY  
Sunday, February 27, 2022  
2:00 p.m.

This will be a zoom meeting available to view in Chilstrom Hall.  
Please let the church office know if you plan to attend.



GLLM ANNUAL MEETING  
February 8, 2022  
1:00 p.m.

Held at Green Lake Bible Camp, Spicer MN  
If you are interested in attending please let the church office know.

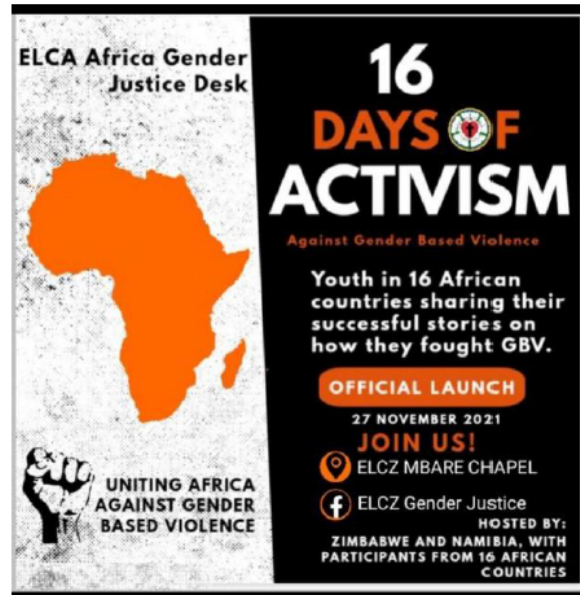


Please join us for Women's Bible Study  
Thursday Mornings  
9:00 a.m. Fellowship  
9:30 a.m. Bible Study  
*\*\* Does not meet on the 3<sup>rd</sup> Thursday of the Month \*\**

Dear friends,

This past year the COVID-19 pandemic has highlighted other global pandemics including Gender-based Violence. *The 16 Days of Activism against Gender-Based Violence* is an annual international campaign that starts on November 25, the International Day for the Elimination of Violence against Women, and runs until December 10, International Human Rights Day. It was started by activists at the inaugural Women’s Global Leadership Institute in 1991.

Rev. Dr. Elitha Moyo, ELCA Regional Representative for Gender Justice and Programs, based in Zimbabwe, coordinated a regional response with the theme “Orange the world: End Gender-Based Violence Now & Say No to Child Marriages!”. (Orange is a highly visible “shouting out” emergency color). There were 16 days of listening to women from 16 countries sharing their stories and experiences, with a special focus on young people. The 16-Days’ campaign was launched on November 27 with an on-line presentation by the Evangelical Lutheran Church in Zimbabwe and ended on December 10 with an event live-streamed by the Evangelical Lutheran Church in Namibia.



The consecration service for Bishop-elect Neo Mogorosi of the ELCSA Western Diocese took place on Sunday, November 28, 2021 in Rustenburg, South Africa. More than 250 people attended the service with strict COVID-19 protocols being observed. The liturgy, hymns and sermon were conducted in both Setswana and English. A brass band provided lively accompaniment.

In his sermon, based on Luke 21:25-36, the newly consecrated bishop, referred to the text in Luke as the “Little Apocalypse,” noting, “There will be strange signs in the heavens and turmoil on earth...but be alert at all times, no



matter what happens, God has not abandoned us...while there is a common saying, ‘When the going gets tough, the tough get going’ as Christians, we do not rely on our own strength but on God’s power and promises.”

I was honored to share greetings from the ELCA Service & Justice Home Area and a letter from Bishop Anne Edison-Albright of the ELCA’s East Central Synod of Wisconsin which is the companion synod to the ELCSA Western Diocese.

The ELCA is committed to accompanying companion churches as they faithfully engage in proclamation of the Gospel, mission outreach and work to mitigate the impact of poverty, HIV&AIDS, climate change, Gender-based violence, conflict and the COVID-19 pandemic in the communities they serve.

Thank you for your prayers, support and your participation in God’s mission locally and globally. Have a blessed Christmas and New Year.

Yours faithfully, Rev. Dr. Philip Knutson

ELCA Regional Representative - Southern Africa / Johannesburg, December 13, 2021

My blog page address is: <https://southernafricanconnections.wordpress.com/>  
Please visit my fundraising page. (Note: This fundraising page is set up for individuals’ gifts only.)  
If you are donating on behalf of a congregation or organization, please visit [ELCA.org/MissionaryGiving](https://ELCA.org/MissionaryGiving) for online giving.



# Memorials & Thanks

**Gifts were given** to the General fund in memory of Ardith Buan from Kirk and Dorothy Lundin, Paul and Sue Lemmer, Karl and Darlene Lundin, Mike and Kris Nelson, Charlie and Jo Ann Lindstrom, Jerry and Lana Johnson, Richard and Betty Allen, Mark and Judy Hulterstrum, and Gary Smith.

**Gifts were given** to the Building fund and General fund in memory of David Larson from Jeanette Erickson, LaVerne Decker, John and Marj Streed, Marge Hellzen, Jean Wieland, Dan and Brenda Johnson, Larry and Pam Radunz, Kirk and Dorothy Lundin, Paul and Sue Lemmer, Jean Wieland, Karl and Darlene Lundin, Vern and Lil Madson, Richard and Betty Allen, Don and Mary Hokanson, and James and Janet Lange.

**Gifts were given** to the General fund in memory of Delbert Blackwell, Darlene Meidal's brother, from Gary Smith, Aldeen and Idell Kadelbach, Sharon and Larry Hanson, Karl and Darlene Lundin, and Richard and Betty Allen.

**Gifts were given** to the General fund in memory of Judy Radunz, Larry Radunz's mother, from Karl and Darlene Lundin, Mike and Kris Nelson, and Mark and Judy Hulterstrum.

**A gift was given** to the General fund in memory of Charles "Chuck" Anderson from Mark and Julie Bredeson.

**A gift was given** to the General fund in honor of Charlie Lindstrom's 90<sup>th</sup> birthday by Jerry and Lana Johnson.

**A gift was given** to the General fund in memory of Daniel Buan by Kirk and Dorothy Lundin.

**A gift was given** to the General fund in memory of her brother Eugene Mehl, from Jennette Erickson.

**A gift was given** to the General fund in memory of Lowell Neumann, Gary Smith's step-dad, from David and Myra Johnson.

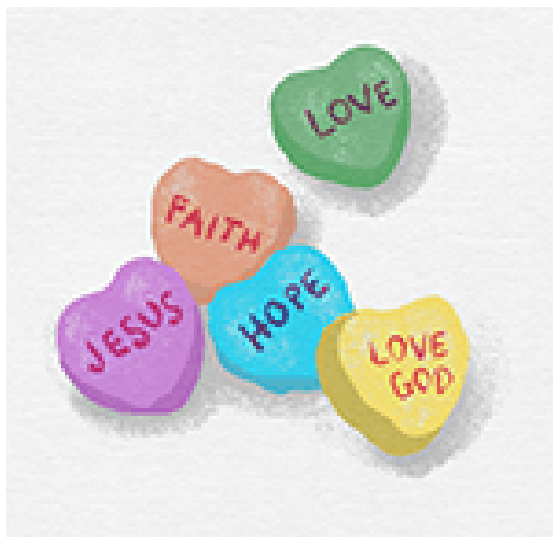
## SPECIAL THANKS

---

**Communion Servers,** A huge thank you to those who have signed up to be communion servers! I am scheduling for the next 3 months - February, March, April and will be contacting those that are already on the schedule to confirm your commitment. If anyone else is willing and would like to serve, please contact me by text or phone call, or the church office. Grateful for your willingness to help. Merry Schmidt 763-772-2706

**Thank you** to all who gave their time to decorate and/or take down the decorations for our Christmas Season. You are appreciated! Jerry and Lana Johnson

---



The first half of February seems dominated by pink and red, cards and candy. But people not in a loving romantic relationship can sometimes feel left out of the festivities. Of course, all people need love — and certainly love is not limited to the romantic kind. Author Leo Buscaglia, who became known as "Dr. Love" for writing about the topic, said, "Too often we underestimate the power of a touch, a smile, a kind word, a listening ear, an honest compliment or the smallest act of caring, all of which have the potential to turn a life around."

Jesus taught that loving one another is second only in importance to loving God (Matthew 22:37-40), and that when we love one another, God lives in us (1 John 4:12). There are so many ways to do that — beyond candy hearts and roses! But Valentine's Day is as good a reminder as any.



## ***SWEETHEART DINNER***

**February 16th, 6:30 pm  
Chilstrom Hall**

**Tickets: \$15.00  
(Must have a ticket to attend.)**

**Menu: Salad, Glazed Pork Loin, Roasted  
Potatoes, Green Beans, Dessert**

**Entertainment Provided**

**Tickets Available at:  
First Lutheran Church Office  
703 S Sibley Ave., Litchfield, MN**

**\*\*All monies raised will go towards the  
Mission Trip to Peru in July 2022\*\***



# Churchwide



**MST-USA 2023** will be taking orders for Papa Murphy's pizzas.

**Last day to order is February 6th.**

Orders may be placed with any MST-USA youth,  
or through the church office.

Pizzas will be available for pick-up after the service  
on **Sunday, Feb 20, 2022.**

If you have any questions, please contact  
Martha Christensen [320-981-0354](tel:320-981-0354).

**Thank you for your support of MST-USA!**

## CHRISTIAN SYMBOL

**VALLEY**—Valleys symbolize life's dark or low points; for example, Psalm 23:4 refers to "the valley of the shadow of death" (ESV).

But valleys also symbolize people who find God's favor because they're lowly and meek.

As a result, valleys can be places of blessing. God lifts his people out of despair and rewards their faithfulness. He also promises to "level" conditions by raising up valleys and bringing down mountains (see Isaiah 40:4).



**Ardith Buan**

January 22, 2022

Please keep her family and friends  
in your prayers.

**Come to me,  
all who labor and  
are heavy laden,  
and I will  
give you rest.**

Matthew 11:28



# February 2022

# February 2022 Calendar


February 2022						
Sun	Mon	Tue	Wed	Thu	Fri	Sat
<p>First Evangelical Lutheran Church 703 South Sibley Ave. Litchfield, MN 320-693-2487</p>						
<p><b>6</b> 8:30 a.m. ELCA coop - KLFD 8:30 a.m. Trad. Worship w/Comm 9:30 a.m. Fellowship &amp; Coffee 9:45 a.m. Sunday School 10:45 a.m. Non-Trad. Worship w/comm &amp; Baptism, Seth Judes</p>	<p><b>7</b></p> <p>6:35 p.m. Boy Scouts, SS Assembly Room</p>	<p><b>8</b> 7:00 a.m. BREW - Chilstrom 1:00 p.m. GLIM Annual Mtg, Spicer, MN 6:30 p.m. NA - Chapel</p>	<p><b>9</b> No Staff Mtg. 5:30 p.m. Bell Rehearsal 6:00 p.m. Confirmation 7:00 p.m. Choir Rehearsal 7:00 p.m. Priscilla Circle, Hosted by Joan Sommerfeld @FLC, Conference room</p>	<p><b>10</b> 7:55 a.m. "Open Gate" on KLFD Radio 9:00 a.m. Women's Bible Study 6:30 p.m. Smart Recovery Mtg. Chapel</p>	<p><b>11</b> 9:30 a.m. Christian Women's Mtg</p>	<p><b>12</b> 7:00 a.m. Men's Group</p>
<p><b>13</b> 8:30 a.m. ELCA coop - KLFD 8:30 a.m. Trad. Worship 9:30 a.m. Fellowship &amp; Coffee 9:45 a.m. Sunday School 10:45 a.m. Non-Trad. Worship **Youth Group Gathering 6:00 p.m. 4-H Meeting</p>	<p><b>14</b> Valentine's Day</p>	<p><b>15</b> 7:00 a.m. BREW - Chilstrom 8:00 a.m. BREW - FB Live 9:00 a.m. Martha Circle 6:30 p.m. NA - Chapel 7:00 p.m. Church Council  *Newsletter Articles Due</p>	<p><b>16</b> 4:30 p.m. Staff Mtg. 5:30 p.m. Bell Rehearsal 6:00 p.m. Confirmation 6:30 p.m. Sweetheart Banquet 7:00 p.m. Choir Rehearsal</p>	<p><b>17</b> 7:55 a.m. "Open Gate" on KLFD Radio 1:30 p.m. WELCA Meeting 6:30 p.m. Smart Recovery Mtg. Chapel</p>	<p><b>18</b></p>	<p><b>19</b></p> <p>5:00 p.m. Movie Night, Holy Word Theater</p>
<p><b>20</b> 8:30 a.m. ELCA coop - KLFD 8:30 a.m. Trad. Worship w/Comm 9:30 a.m. Fellowship &amp; Coffee 9:45 a.m. Sunday School 10:45 a.m. Non-Trad. Worship w/Comm</p>	<p><b>21</b> Presidents' Day 9:30 a.m. Rachel Circle</p>	<p><b>22</b> 7:00 a.m. BREW/Chilstrom 8:00 a.m. BREW - FB Live 8:30 a.m. Quilters 6:30 p.m. NA - Chapel</p>	<p><b>23</b> 4:30 p.m. Staff Mtg. 5:30 p.m. Bell Rehearsal 6:00 p.m. Confirmation 7:00 p.m. Choir Rehearsal</p>	<p><b>24</b> 7:55 a.m. "Open Gate" on KLFD Radio 9:00 a.m. Women's Bible Study 6:30 p.m. Smart Recovery Mtg. Chapel</p>	<p><b>25</b></p>	<p><b>26</b> 7:00 a.m. Men's Group</p>
<p><b>27</b> 8:30 a.m. ELCA coop - KLFD 8:30 a.m. Trad. Worship w/Comm 9:30 a.m. Fellowship &amp; Coffee 9:45 a.m. Sunday School 10:45 a.m. Non-Trad. Worship w/Comm, Baptism, Hadley DeWolf 2:00 p.m. Crow River Conference Assembly</p>	<p><b>28</b></p>	<p><u>Local Cable Access TV Schedule:</u>            Sunday 11 am Encore Presentation COOP            Monday 11 am Encore Presentation COOP            Tuesday 11 am Encore Presentation Sun. First Lutheran Church            Wednesday 11 am Encore Presentation Sun. COOP            Thursday 3 pm Encore Presentation Sun. First Lutheran Church</p>				
<p>*Pastor Tom will be on vacation 02/08/2022 until 2/15/22</p>						

# February Serving Group & Birthdays

<b>Chairs</b>	Carol Dragt
<b>Chuck &amp; Karen Eberbard</b>	Trina Driver
Jim & Holly Cottington	Steve Durkee
Michael & Debra Cziok	Mark & Jodi Elam
Kris (Breault) Danielson	Marlys Elam
Wendy Danzeisen	Troy & Julie Elam
Ali and Steven LaVine	Nate & Meredith Elj
Douglas & Nancy Decker	Ralph & Gloria Elj
LaVerne Decker	Martin & Laure Engelke
Ernest & Jackie Defries	Jeanette Erickson
Jenny Defries	Vonnie Escen
Steve & Julie Dengerud	Becky Estrada
Douglas & Mary Desens	Danny Estrada
Brad & Krista DeWolf	
Charles & Alison DeWolf	
Will & Kim Dolan	
Mike & Dawn Doty	
Matt Draeger	

**February Ushers**  
**8:30 a.m.**  
 Josh Baumgartner - C  
 Jacob Bredeson  
 Gary Cervin  
 John Hulterstrum  
  
**10:45 a.m.**  
 Corey Cervin - C  
 Tom Fruetel  
 Chad Mahlow

**February**



Open



## February BIRTHDAYS

**FEBRUARY 1**  
 Anthony Nelson  
 Darla Peterson  
 Kira Sparboe  
**FEBRUARY 2**  
 Kelsey Ballard  
 Kathy Herzog  
 Cody Klabunde  
**FEBRUARY 3**  
 Matthew Herzog  
 Holly Seifert  
 Bryanna Wagner  
 Abby Williams  
**FEBRUARY 4**  
 Jodi Elam  
 Chad Johnson  
 Mark Lease  
 Jesse Sanden  
**FEBRUARY 5**  
 Robert Johnson  
**FEBRUARY 6**  
 Aidan Berube  
 Travis Kramer  
 Jason Oslund  
**FEBRUARY 7**  
 Andrew Ross  
**FEBRUARY 8**  
 Suzann Buck  
 Bryan Larson

**FEBRUARY 9**  
 Adrian Baldwin  
 Roger Larson  
 Brenda Pollock  
**FEBRUARY 10**  
 Beth Fruetel  
 Ryan Johnson  
 Kylie Michels  
 Dale Rueckert  
 Teri Starkey  
**FEBRUARY 11**  
 Logan Hanson  
 Blake Hoecke  
 John Hulterstrum  
**FEBRUARY 12**  
 Ethan Brott  
 Darcy Lease  
**FEBRUARY 13**  
 Jim Asmus  
 Mary Steenrod  
**FEBRUARY 14**  
 Gloria Elj  
 Danica Rueckert  
 David Schwartz  
**FEBRUARY 15**  
 Joseph Gaulrapp  
 Darren Schreiber

**FEBRUARY 16**  
 Barbara Keller  
 Allen Liestman  
 Andrea Michels  
 Susan Nelson  
 Michael Pierce  
 Braxton Kerstein  
**FEBRUARY 17**  
 Mildred Neitzel  
 David Nelson  
 Emma Stalberger  
**FEBRUARY 18**  
 Erin Groskreutz  
**FEBRUARY 19**  
 Erin Groskreutz  
 Eric Hulterstrum  
 Mark Hulterstrum  
**FEBRUARY 20**  
 Ralph Elj  
 Darlene Groskreutz  
**FEBRUARY 21**  
 Jenny DeFries  
 Isla Koelln  
**FEBRUARY 22**  
 Kaitlyn Borg  
 Richard Buck  
 Nathan Elj  
 Amanda Hickman  
 Kelsey Pecholt  
 Jesse Peterson


**FEBRUARY 23**  
 Jo Ann Lindstrom  
 Craig Lokken  
 Macie Manning  
 Stacy Roush  
**FEBRUARY 24**  
 Richard Bohn  
 Randy Worden  
**FEBRUARY 25**  
 Jayne Holmgren  
**FEBRUARY 26**  
 Richard Buan  
**FEBRUARY 18**  
 Joshua Fenton  
 Andrew Hoffmann Jr.  
 Austin Lease  
 Penny Lease  
 Gavin Marotte  
 Cassandra Olson  
 Matthew Wagner  
**FEBRUARY 27**  
 Mae Brehmer  
 Jesse Johnson  
**FEBRUARY 28**  
 Katelyn Guggemos  
 Debra Henkelman  
 Angela Kinsella  
**FEBRUARY 29**  
 Luke Beckstrand

# Senior Dining Menu

## Lutheran Social Service

## February 2022

## Senior Nutrition Services

	<b>Tuesday, 1st</b>	<b>Wednesday, 2nd</b>	<b>Thursday, 3rd</b>	<b>Friday, 4th</b>
	Baked Chicken	Lasagna	Turkey Stuffing Casserole	Beef Chili w/ Beans
	Baked Potato w/Sour Cream	California Normandy	Mixed Vegetables	Romaine Salad w/ Dressing
	Italian Blend	Peaches	Sliced Apples	Corn Bread w/ Margarine
	Bread w/Margarine	Breadstick	Bread / Margarine	Blushing Pears
	Dessert	Dessert	Dessert	Cookie
	Low Fat Milk	Low Fat Milk	Low Fat Milk	Low Fat Milk
	<b>Tuesday, 8th</b>	<b>Wednesday, 9th</b>	<b>Thursday, 10th</b>	<b>Friday, 11th</b>
	Spaghetti w/ Meat Sauce	Creamy Chicken	Pork loin	Meatloaf
	Romaine Salad w/ Dressing	Mashed Potatoes	Candied Yam	Butternut Squash
Pineapple	Peas and Carrots	Broccoli	Stewed Tomatoes	
Texas Toast	Bread w/ Margarine	Bread/ Margarine	Bread/ Margarine	
Cookie	Warm Fruit Crisp	Dessert	Dessert	
Low Fat Milk	Lowfat Milk	Low Fat Milk	Low Fat Milk	
<b>Happy Valentine's Day</b>	<b>Wednesday, 16th</b>	<b>Thursday, 17th</b>	<b>Friday, 18th</b>	
Tater Tot Casserole	Swedish Meatballs	Roasted Turkey w/ gravy	BBQ Pork on a Bun	
French Cut Green Beans	Mashed Potatoes	Mashed Potato	Baked Beans	
Warm Peaches	Carrots	Peas	Spiced Pears	
Cookie	Bread/ Margarine	Sage Dressing	Dessert	
Dinner Roll w/ Margarine	Dessert	Dessert	Low Fat Milk	
Low Fat Milk	Low Fat Milk	Low Fat Milk	Low Fat Milk	
<b>Monday, 21st</b>	<b>Wednesday, 23rd</b>	<b>Thursday, 24th</b>	<b>Friday, 25th</b>	
Orange Chicken	Beef & Bean Burrito Bake	Chicken Fried Steak w/ Gravy	Fish Patty w/Tarter Sauce	
Brown Rice	Lettuce/Tomato/SC	Mashed Potato w/ Gravy	Bun	
Oriental Vegetables	Pears	Green Beans	Cheesey Hashbrown	
Mandarin Oranges	Dessert	Bread/ Margarine	Baked Beans	
Cookie	Low Fat Milk	Dessert	Peaches	
Low Fat Milk	Low Fat Milk	Low Fat Milk	Low Fat Milk	



**Call LSS Meals to order/change**  
**320-693-6203**  
*(Litchfield Site-Leave Message)*



Menu subject to change due to unforeseen circumstance

This service is funded in part by a contract from the Area Agency on Aging with funding from the Federal Older Americans Act through the Minnesota Board on Aging. Approved by Donna Dunlap RD, LD

Additional funds are provided by the State of Minnesota, United Ways, local communities, and other adult contributions.

Posted menu is regular diet. Diabetic, sodium, and fat restricted diets available upon request. Regular menu provides average of 700-800 calories.

\*If you are interested in learning about the Supplemental Nutrition Assistance Program, please call 1-800-488-4146. SNAP or EBT Payment is accepted

**320-693-6203**





In *It's Okay Not to Be Okay*, Christian author Sheila Walsh looks at the all-encompassing love that Jesus expects of his followers. He commands us to "love the Lord your God with all your heart and with all your soul and with all your strength and with all your mind, and your neighbor as yourself" (Luke 10:27, ESV).

But we can't love that way without faith, Walsh writes. "I'm not living by faith if I have an answer to everything. If I understand everything God does or doesn't do, then all I need to love him with is my mind. We're called to love him with more." That "more," she explains, involves these paradoxes: "We love with all our heart, even when it's broken. We love with our soul, even when our humanity wrestles against our situation. We love with our strength, even when it's almost gone. We love with our mind, even when we don't understand."

Even if God's purposes and plans don't make sense here on earth, we can heed this advice from the great preacher Charles Spurgeon: "When we cannot trace [God's] hand, we must trust his heart."



## *A wondrous washing*

David's prayer of repentance reveals a desire to be cleansed of his sin.

**Directions:** Unscramble the words on the left. Then match them with the correct phrases from Psalm 51 (NIV) on the right.

ETRCAE _ _ _ _ _	_____	out my transgressions (v. 1)
HSAW _ _ _ _	_____	away all my iniquity (v. 2)
RSEEROT _ _ _ _ _	_____	me with hyssop, and I will be clean (v. 7)
WNERE _ _ _ _	_____	me, and I will be whiter than snow (v. 7)
TLBO _ _ _ _	_____	your face from my sins (v. 9)
DIHE _ _ _ _	_____	out all my iniquity (v. 9)
NATRG _ _ _ _ _	_____	in me a pure heart (v. 10)
LNSECAE _ _ _ _ _	_____	a steadfast spirit within me (v. 10)
LBTO _ _ _ _	_____	to me the joy of your salvation (v. 12)
WHSA _ _ _ _	_____	me a willing spirit, to sustain me (v. 12)

Answer: blot, wash, cleanse, wash, hide, blot, create, renew, restore, grant

## Friendship SOUP

Make jars of Italian barley soup to share love and warmth with friends.



### What you need:

- 1 cup pearly barley
- ½ cup sundried tomatoes
- 1 Tbsp dry minced garlic
- 1 Tbsp dry minced onion
- 1 veggie bouillon cube
- Glass pint jars with lids
- Cardstock
- Scissors
- Pen

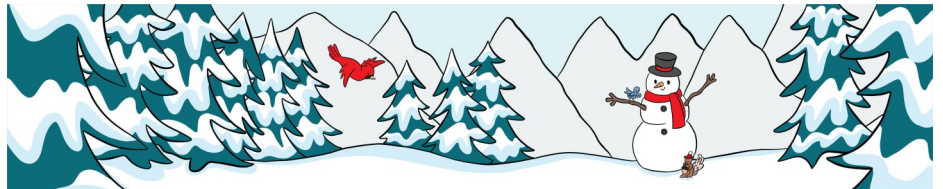
### What you do:

1. In order, layer the first five ingredients into the jar.
2. Trace the outline of the lid onto cardstock. Cut out.
3. On the card, write these directions: Remove wrapper from bouillon cube. Add contents of jar to saucepan. Add 4 cups water and a can of diced tomatoes. Bring to a boil over high heat, reduce to low. Simmer about 20 minutes, until barley is tender. Serve with parmesan cheese.
4. Place the card atop the lid. Screw on the canning ring to keep it in place.

## God of love — for, with and in us

An ancient heresy — that the God of the Old Testament was a God of judgment and wrath, while the God of the New Testament is a God of grace and love — still persists a bit. Yet God is the same God, with the same characteristics, throughout time. Way back in Genesis 3, God graciously sewed garments to clothe humans, although they had disobeyed him. And even in the Gospels, God's anger was evident through Jesus' response to temple money-changers cheating the poor.

God always works for life and goodness in all things. Sometimes people misunderstand God's ways; sometimes God, like a human parent, uses "tough love." Mick Brooks writes: "The Old Testament is God for us, the time of Christ is God with us, and the age of the Holy Spirit is God in us" (*Every Day With Jesus*, Sept/Oct 2020). That may be a bit simplistic, but it's a good reminder that while God's ways of interacting with us vary, he — the God of Love — does not.



## A prayer to our omnipotent God

Remind us, O God, that you are above us, watching over us as a good shepherd. You can see what we cannot see. Remind us that you are below us, ready to lift us up in our weakest moments. Remind us that you are behind us, to give us encouragement when we feel like giving up. Remind us that you are in front of us, calling us to move forward in faith, even when we can't see how things will work out. Remind us that you are beside us, holding our hands, no matter what we're going through. Remind us that you are within us, closer than each breath we take.

Jesus, thank you for being Emmanuel, God-with-us, and for not abandoning us. Thank you for sending us your Holy Spirit, who comes alongside to help us, even when no one else can. As we remember you, O God, strengthen our hope and restore the joy of our salvation. Amen.

—Malcolm Marler, adapted

# Churchwide



## Worship Schedule

### Sunday, February 6, 2022

- 8:30 a.m. Traditional Worship with Communion
- 9:30 a.m. Fellowship and Coffee Hour
- 9:45 a.m. Sunday School
- 10:45 a.m. Non-Traditional Worship w/Communion

### Sunday, February 13, 2022

- 8:30 a.m. Traditional Worship
- 9:30 a.m. Fellowship and Coffee Hour
- 9:45 a.m. Sunday School
- 10:45 a.m. Non-Traditional Worship

### Sunday, February 20, 2022

- 8:30 a.m. Traditional Worship with Communion
- 9:30 a.m. Fellowship and Coffee Hour
- 9:45 a.m. Sunday School
- 10:45 a.m. Non-Traditional Service w/Communion

### Sunday, February 27, 2022

- 8:30 a.m. Traditional Worship with Communion
- 9:30 a.m. Fellowship and Coffee Hour
- 9:45 a.m. Sunday School
- 10:45 a.m. Non-Traditional Worship w/Communion

### February 2022 Special Days

- Black History Month — February 1-28, 2022
- Groundhog Day — February 2, 2022
- Valentine's Day — February 14, 2022
- Presidents' Day — February 21, 2022
- Transfiguration Sunday — February 27, 2022



He was transfigured before them, and his face shone like the sun, and his clothes became white as light.

Matthew 17:2, ESV

### Preparation for worship

God, when you call me to a task this week, help me to respond like Isaiah: "Here am I; send me!" (6:8).

Holy Spirit, you have awakened us to this new day. We praise you! Open our hearts to whatever new thing you are doing.

Jesus, I come today with a whole host of emotions and distractions. You know them all. Wrap me in your love, that I may rest.

Sometimes, Lord, you appear to us in brightness; sometimes, we hear your voice out of a cloud. Whatever our circumstances, may we be assured of your presence. Amen.



### Local Cable Public Access TV Schedule:

- Sun. 11 a.m. Encore Presentation COOP
- Mon. 11 a.m. Encore Presentation COOP
- Tue. 11 a.m. Encore Presentation Sun. FLC
- Wed. 11 a.m. Encore Presentation Sun. COOP
- Thur. 11 a.m. Encore Pres. Sun. Trinity G.C.
- Thur. 3 p.m. Encore Presentation Sun. FLC
- Friday 11 a.m. Encore Presentation Sun. Zion

### MOVIE NIGHT

Holy Word Theater  
5 p.m.  
Saturday February 19, 2022

**Featuring:** *To Be Determined....*  
\*\*Popcorn will be provided -  
please bring your own beverage.



## PLEASE PRAY FOR OUR MEN AND WOMEN IN THE MILITARY:



\*Our members known to be in the military are:

**Staff Sgt. US Army, Zachary Olimb**, Vicenza, Italy, grandson of Edna and Martin Oldenburg, Vern and Lil Madson;

**Master Sgt. Austin Kleinschmidt**, 934<sup>th</sup> Airwing, Minneapolis, son of Kipp and Lynette Kleinschmidt;

**Staff Sgt. Matthew Wiechmann**, stationed at Fort Drum, NY; son of Virgil and Jamie Wiechmann;

**Major Troy Thomas**, Severance, CO, nephew of Valda Thomas and Mike and Gaylene Thomas;

**Eric Kammermeier**, active duty United States Navy, son-in-law of Mike and Beth Boyle;

**Airman 1<sup>st</sup> Class John Rogers**, Misawa Air Force Base, Japan. Grandson of Janet and Jim Lange.

*Welcome Home! to those of you who now have returned to the States. Thank you all for your service*

## GLOBAL MISSIONS OFFERING: Feeding Children International



### No regrets!

If you've ever regretted a big purchase and wondered if you could return it, you're familiar with the nagging feeling of buyer's remorse. Thankfully, our Redeemer never experienced that. As a church sign proclaims, "When Jesus bought you, he never had buyer's remorse. And he never will!"

To Jesus, the payment of suffering and death was well worth the payoff. "For the joy set before him he endured the cross, scorning its shame, and sat down at the right hand of the throne of God" (Hebrews 12:2, NIV).



Be still, Receive God's Love, Embrace God's Word, Welcome the Day.

### B.R.E.W.

meets every **Tuesday morning at 7:00 a.m.** with Pastor Tom for coffee and fellowship. Join us!!

Please keep our shut-in members in your prayers,

Meeker Manor: Mary Klosner

Emmaus Place: Mae Brehmer

Gloria Dei: Lois Rusch, Janet Lundin

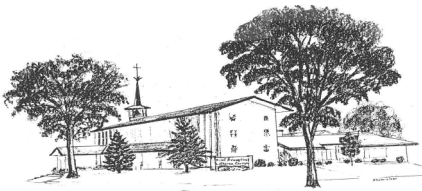
Bethesda, Willmar: Richard Bohn

Litchfield, in own home: Jutta Goodrich



FIRST NEWS is a monthly publication of First Evangelical Lutheran Church,  
703 S. Sibley Ave. Litchfield, MN 55355

Please send submissions to: The Church Office by February 15th  
For the NEXT ISSUE: March 2022



# FIRST NEWS

FIRST EVANGELICAL LUTHERAN CHURCH  
703 South Sibley Avenue • Litchfield, MN 55355

Address Service Requested

Non Profit  
Organization  
U.S. POSTAGE PAID  
Permit NO. 1  
Litchfield, MN  
55355



## Ministry Staff:

Tom Evenson, Pastor  
firstsr@hutchtel.net

Heidi Thoma, Education Coordinator  
heidithoma3@gmail.com

Judy Berglund, Office Manager  
firstoffice@hutchtel.net

Sara Rick, Bookkeeper  
firsttr@hutchtel.net

Carol Heath, Financial Secretary  
firsttr@hutchtel.net

Bea Devereaux, Organist, Senior Choir, and Bell Choir Director

Carol Dragt, Director of Music, Non-Traditional

Kipp Kleinschmidt, Media Director  
firstmedia@hutchtel.net

Scott Nelson, Custodian

Joel Ramthun, Custodian

First Lutheran Church Office: 320-693-2487

LIKE us on Facebook!

